

# GPS RADIONOVA® RF Antenna Module

Part No. M10264

Product Specification

## Applications

- Personal Navigation Devices (PNDs)
- Portable Media Players (PMPs)
- Personal Digital Assistants (PDAs)
- Feature phones / Smart phones
- Ultra Mobile Devices (UMDs)
- Asset Tracking / Personal Safety

## Features

- Low cost single package GPS RF antenna module
- SiRFstarIII GPS Chipset Architecture
- Low 5mm height for thin devices
- Low current consumption
- Easy to use 'drop-in solution'
- External antenna support
- Resistant to de-tuning

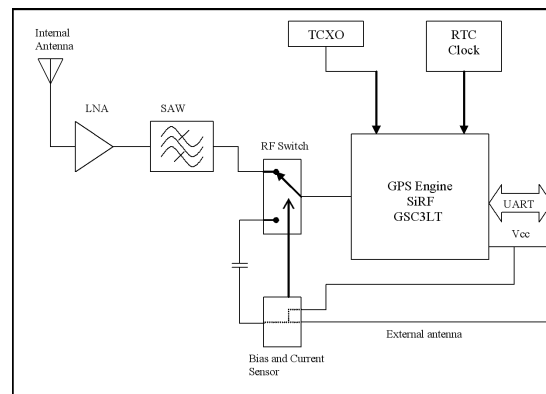
## Product Description

GPS RADIONOVA M10264 is a highly integrated GPS RF Antenna Module suitable for L1-band GPS and A-GPS systems. The device is based on the high performance SiRFstarIII GPS architecture combined with Antenova's high efficiency antenna technology designed to provide an optimal radiation pattern for GPS reception.

All front-end components are contained in a single package laminate base module providing a complete GPS receiver for optimum performance. M10264 operates on a single 3.6V positive bias supply with low power consumption and available low power modes for further power savings.

M10264 is supported by SiRF stand alone software and uses a UART as the host processor interface. The M10264 also incorporates an antenna switch with built-in current sensing for optional active antenna connection.

## Functional Block Diagram



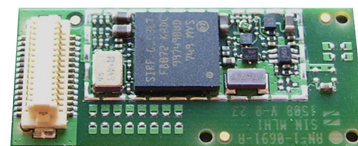
## Package Style

28 x 13mm RF Antenna Module

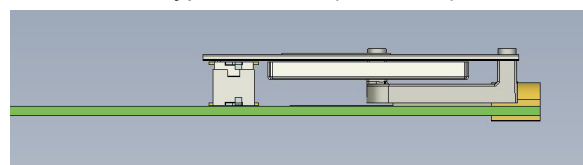
Top View



Component side view (w/o shielding can)



Typical Mount (side view)



## Absolute Maximum Ratings

Symbol	Parameter	Min	Max	Unit
Vbat	Supply Voltage	-0.2	5.5	V
RFin	RF Input Power		-10	dBm
ESD	Electrostatic Discharge Immunity (HBM)	-2	+2	kV
T <sub>STG</sub>	Storage Temperature	-40	+85	°C
I <sub>IO_REG</sub>	I/O voltage regulator output current		10	mA
V <sub>IO</sub>	I/O pin voltage (TXA, RXA, ED[0,1], GPIO [2,6,8], TM, CLK)		1.98	V
V <sub>ON_OFF</sub>	ON_OFF line supply voltage		1.83	V

\* Exposure to absolute ratings may adversely affect reliability and may cause permanent damage.

## Recommended Operating Conditions

Symbol	Parameter	Min	Typ	Max	Unit
Ta	Ambient Temperature	-20	25	+70	°C
Vbat	Main Supply Voltage	3.3	3.6	5.0*	V
V <sub>ON_OFF H</sub>	Logic High for ON_OFF pin	1.5	1.8	1.83	V

\* 4.2V max supply voltage for use with external antenna option or version.

## DC Electrical Characteristics

Conditions: Vcc = 3.6V, Ta = 25 °C

Symbol	Parameter	Typ	Unit
I <sub>CC_ACQ</sub>	Total Supply Current (Acquisition Mode)	50	mA
I <sub>CC_TRK</sub>	Track Mode	30	mA
I <sub>CC_(HIBERNATE)</sub>	Sleep (Hibernate) Mode	30	µA
V <sub>IO_REG</sub>	I/O voltage regulator output voltage	1.8	V

Note: Power Management modes above are automatically accessed and managed through SiRF software/Firmware.

## External Antenna

Symbol	Parameter	Min	Typ	Max	Unit
	Insertion loss from module's connector to external antenna switch		0.7		dB
	Insertion loss of external antenna switch		0.35		dB
I_ext	External antenna bias current	2*		30	mA
V_ext	External antenna bias voltage**	Vcc-0.67		Vcc-0.044	V
	External antenna LNA gain (including cable loss)	15		27	dB
V <sub>Ant_Det</sub>	Output voltage at Ant_Det pin, external antenna detected	(Vcc-0.35) *0.72	(Vcc-0.12) *0.72		V
	Output voltage at Ant_Det pin, no external antenna detected			0.25	V

\* Below this threshold the sensor might not detect the external antenna.

\*\* Depends on external antenna current draw.

## RF Specifications

Conditions: Vbat = 3.6V, Ta = 25 °C

Symbol	Parameter	Typ	Unit
G <sub>LNA</sub>	LNA Gain	18	dB
NF <sub>LNA</sub>	LNA Noise Figure	1.1	dB
P <sub>1dB</sub>	1dB Compression Point	-65	dBm
ANT <sub>RL</sub>	Antenna Return Loss	-15	dB
ANT <sub>EFF</sub>	Antenna Total Efficiency	70	%
ANT <sub>EFF RHCP</sub>	Antenna RHCP Efficiency	50	%
ANT <sub>BW</sub>	Antenna Bandwidth at -10dB	30	MHz

## Band Rejection

Frequency	Standard	Typ	Unit
824-849	Cellular CDMA	43	dB
869-894	GSM850	43	dB
880-915	GSM900	44	dB
1710-1785	DCS	44	dB

1850-1910	PCS	48	dB
1920-1980	WCDMA	51	dB
2400-2492	WLAN, BT and WiMAX	60	dB

## System Performance

Communication	Specification
Data Output Protocol <sup>1</sup>	NMEA 0183
Host Interface	UART - CMOS 1.8V
Baud Rate <sup>1</sup>	9600 bps
GPS Engine	
Chip	SiRFstarIII GSC3LT
Channels	Up to 20
Position Accuracy <sup>2</sup>	
Autonomous	2.5m CEP
Maximum Position Update Rate	1 Hz
Sensitivity	
Acquisition	-142dBm
Tracking	-159dBm
TTFF	
Hot Start	<1s
Warm Start	<35s
Cold Start	<35s

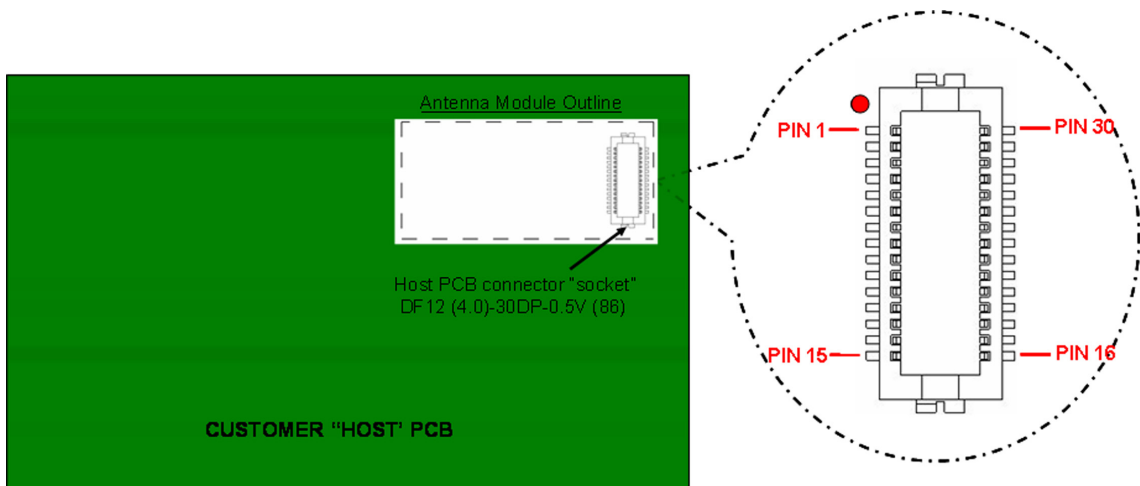
<sup>1</sup> Standard output protocol and baud rate - please contact Antenova for specific requirements.

<sup>2</sup> Circular Error Probability

## Pin out Description

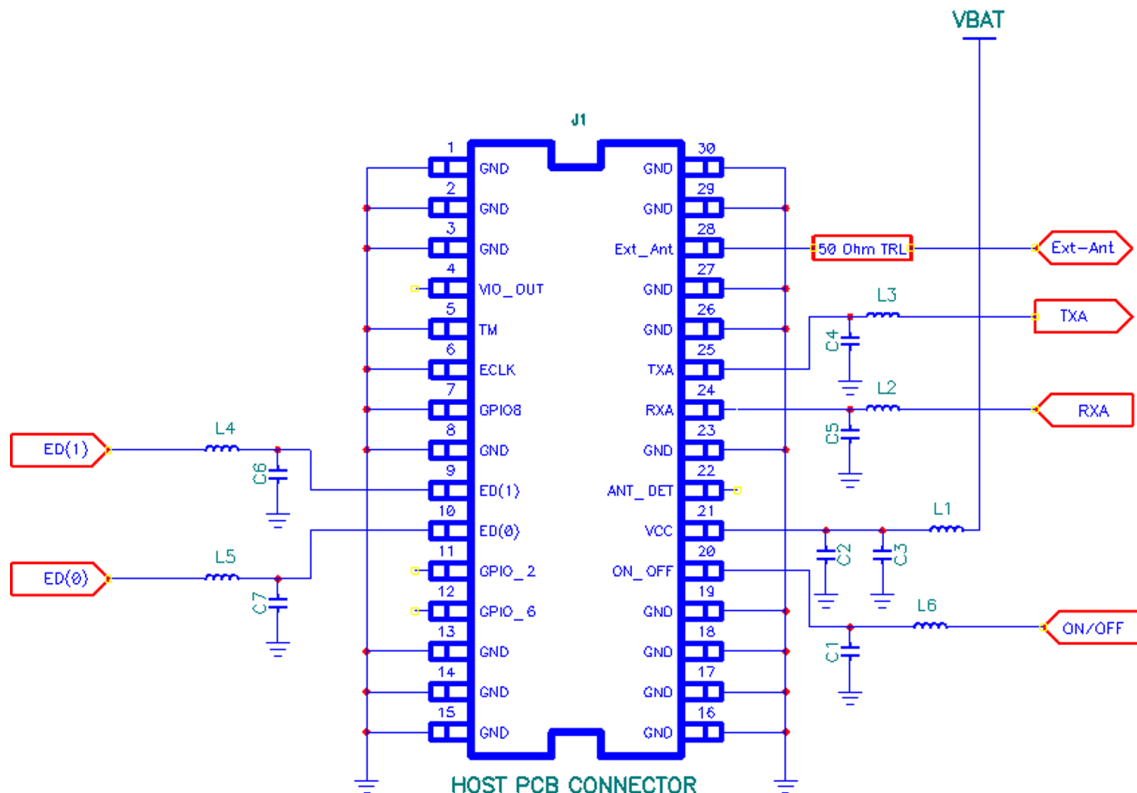
Pin	Name	I/O	Pull	Description
1, 2, 3, 8, 13, 14, 15, 16, 17, 18, 19, 23, 26, 27, 29, 30	GND			Ground connections
4	VIO_OUT	O		I/O voltage regulator output. Use to generate CMOS 1.8V inputs (ED[0,1], GPIO). Bypass to ground using 22pF.
5	TM	O	None	Time Mark (1.8V) 1PPS (one pulse per second). Connect to GND if not used.
6	ECLK	I	None	External clock for Frequency Aiding (1.8V) in A-GPS applications. Connect to GND if not used.
7	GPIO8	I/O	None	Time Aiding Input (CMOS 1.8V) in A-GPS applications. Connect to GND if not used.
9	ED[1]	I/O	Up	<u>Flash</u> : Memory Boot mode Configuration (CMOS 1.8V). See table below.
10	ED[0]	I/O	Down	<u>Flash</u> : Memory Boot mode Configuration (CMOS 1.8V). See table below.
11	GPIO2	I/O	None	<u>Flash</u> : leave unconnected or bypass to GND using 22pF.
12	GPIO6	I/O	None	<u>Flash</u> : leave unconnected.
20	ON_OFF	I	Down 13.9kΩ	Power RUN/SLEEP control line (1.8V). Momentary high pulse to initiate SLEEP mode in the NORMAL state and resumes operation when in SLEEP state. Pulse duration 100µs with minimum inter-pulse interval of 1s. See usage below.
21	VBAT	I		Power supply 3.6V
22	Ant_Det	O	Down	This output is high if the external antenna is detected; bypass to ground using 22pF; minimum output load 50kΩ. If not used, leave unconnected
24	RXA	I	Up	UART Receive Input (1.8V). Main message connection to host CPU. Input channel for receiving commands from SiRF software or user-written program. <u>Do not pull-down this pin</u> nor tie this pin high using an external pull-up. If not used, leave unconnected.
25	TXA	O	None	UART Transmit Output (CMOS 1.8V). Main message connection to host CPU. Output channel that provides navigation data.
28	Ext_Ant	I		External antenna RF connection. Provides bias current. Connect directly to a 50Ω line. If not used, leave unconnected.

<sup>1</sup> Drive levels to RXA input pin must be set to open or driven to zero whenever VIO drops to zero. Do not tie this pin high using a pull-up.



## Recommended Application Schematic

The following schematic shows the recommended connection for the module for stand alone applications. Please contact Antenova for A-GPS applications.



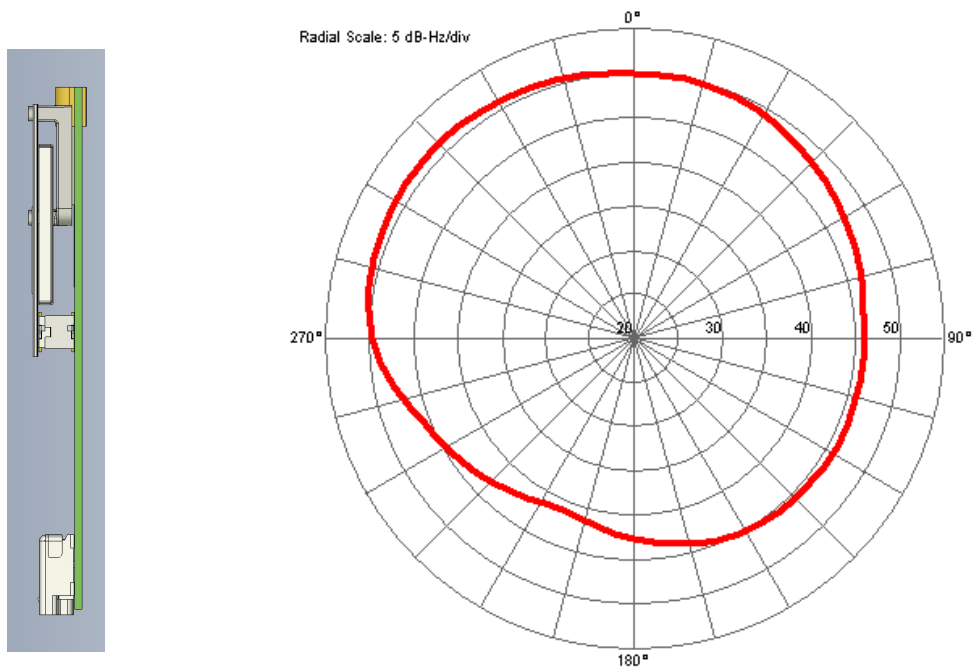
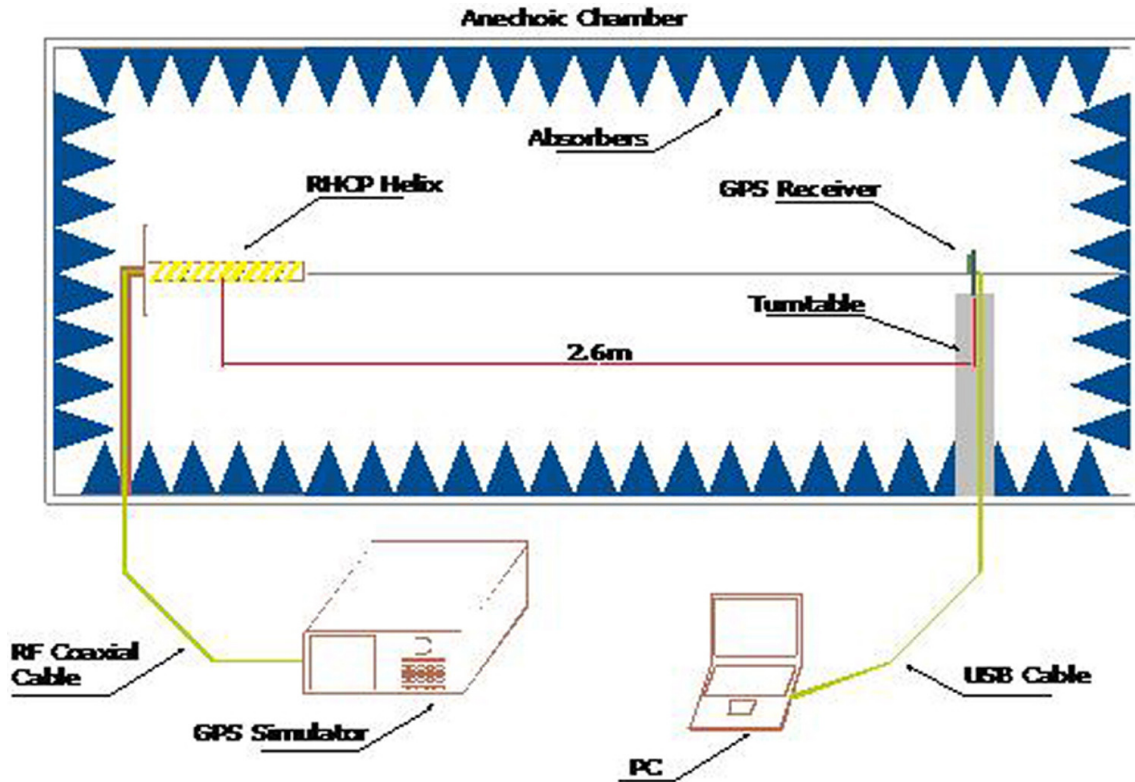
### Notes:

1. GPIO2, and GPIO6 are left unconnected.
2. If the external antenna is not used on M10264-C2F, leave the corresponding pin unconnected.
3. If there is no plan for updating the firmware code of the module after installed in the final product, then ED[0] and ED[1] (Pin 9 and 10 of the host connector) can be connected directly to ground and the corresponding components (C6, C7, L4, L5) of the LC filters removed.
4. Notice that the Hirose connector is not polarized: care must be taken in preventing insertion of the module in the wrong direction

## Bill of Material

Ref. Designator	Values	QTY.	Description/Comments
L1, L2, L3, L4, L5, L6	47nH	6	Murata LQG15HN47NJ02 or equivalent with Self Resonant Frequency (SRF) of 1600MHz. Do not use wire wound inductors.
C1, C2, C4, C5, C6, C7	22pF	6	Place as close as possible to the connector
C3	2.2uF	1	
J1	Connector 30 ways	1	Hirose DF12 (4.0) - 30DP-0.5V (86)

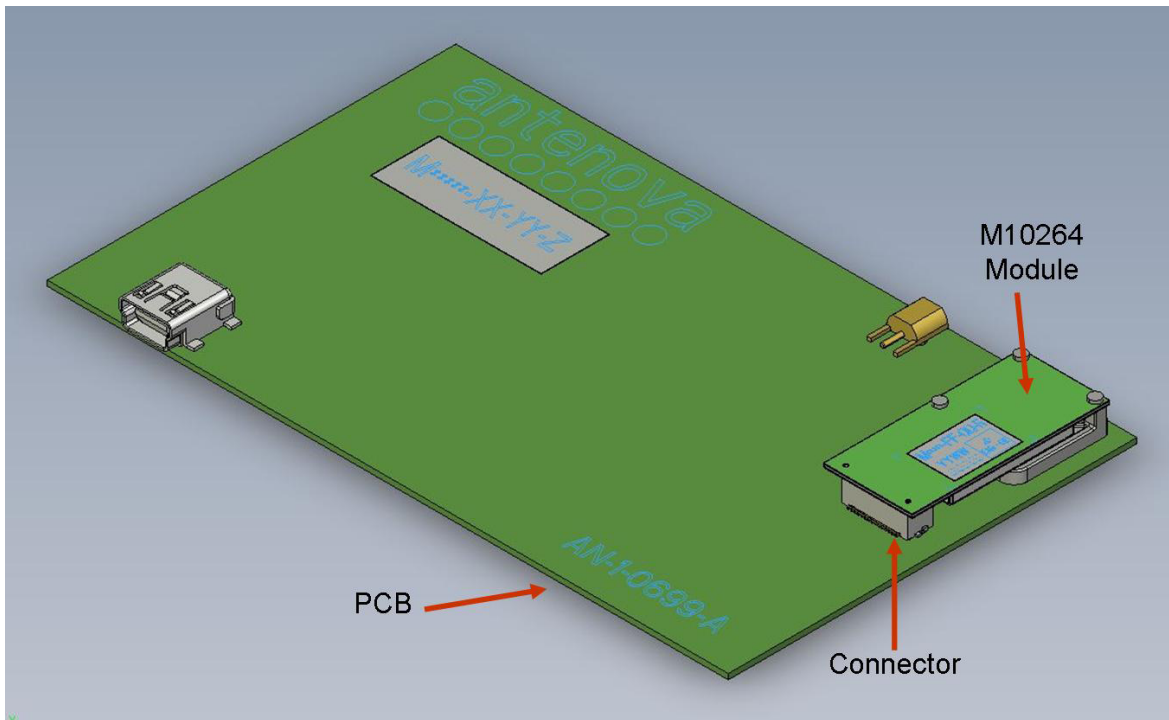
## Typical Chamber Performance



Note: Radiation pattern measured on Antenna's standard test board. Tuning may be needed in product integration to adjust radiation pattern.

## Typical RF Antenna Module Placement

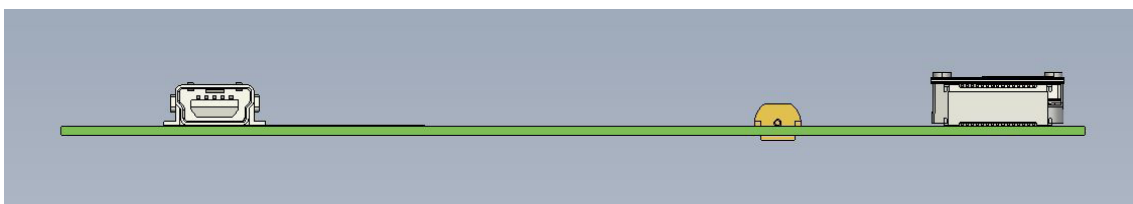
Note: Module placement locations and orientations are critical for achieving optimal system performance. It is strongly recommended to contact Antenna for design recommendations.



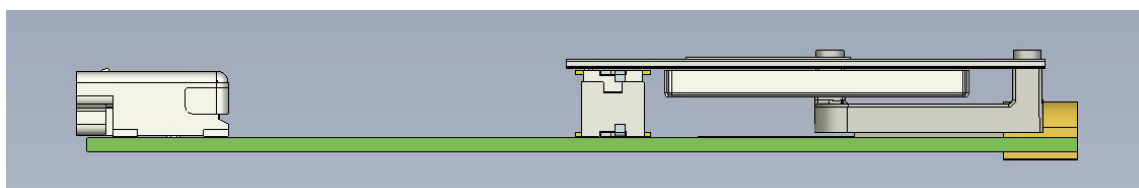
**Front View**



**Back View**

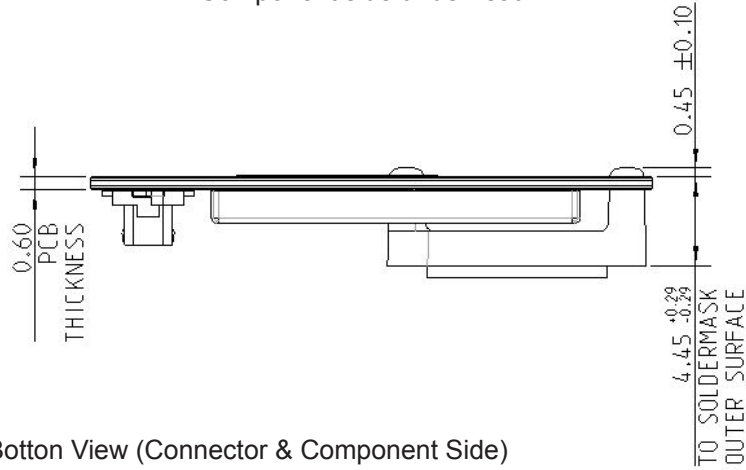


**Side View**

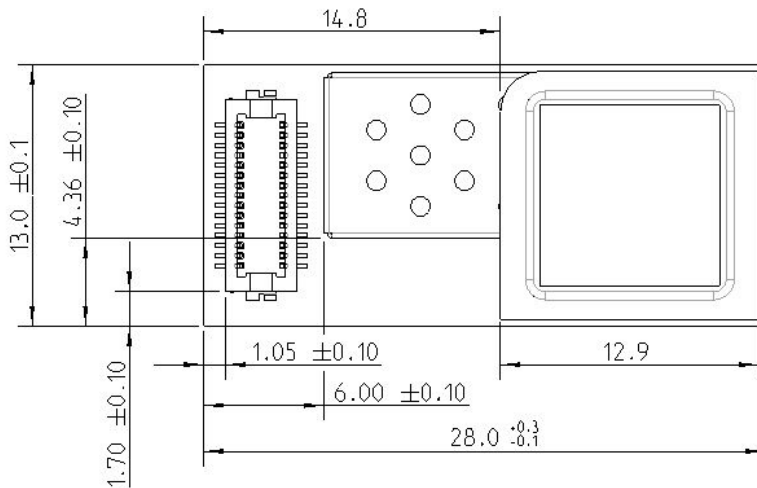


## Mechanical Drawing

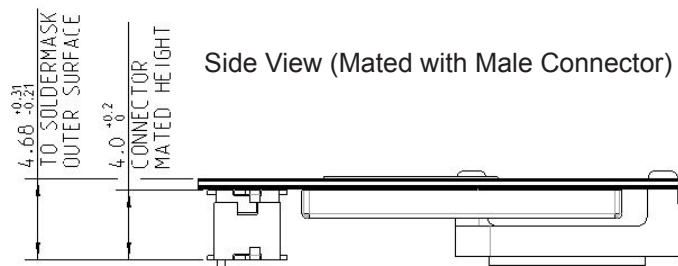
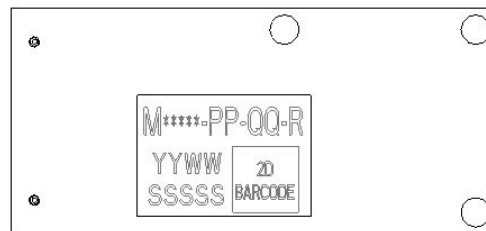
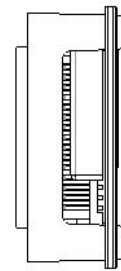
Side View with Antenna Side on top and Connector & Component side underneath



Bottom View (Connector & Component Side)



Side View



Notes: Units = mm



[www.antenova.com](http://www.antenova.com)

### Corporate Headquarters

#### Antenova Ltd.

Far Field House  
Albert Road  
Stow-cum-Quy  
Cambridge, CB25 9AR  
UK

**Tel:** +44 (0) 1223 810600  
**Fax:** +44 (0) 1223 810650  
**Email:** [sales@antenova.com](mailto:sales@antenova.com)

### USA Headquarters

#### Antenova USA

Rogers Business Park  
2541 Technology Drive, Suite 403  
Elgin, IL 60124  
USA

**Tel:** +1 (847) 551-9710  
**Fax:** +1 (847) 551-9719  
**Email:** [sales@antenova.com](mailto:sales@antenova.com)

### Asia Headquarters

#### Antenova Asia Ltd.

4F, No. 324, Sec. 1, Nei-Hu Road  
Nei-Hu District  
Taipei 11493  
Taiwan, ROC

**Tel:** +886 (0) 2 8797 8630  
**Fax:** +886 (0) 2 8797 6890  
**Email:** [sales@antenova.com](mailto:sales@antenova.com)

**Copyright® 2010 Antenova Ltd.** All Rights Reserved. Antenova® and RADIONOVA® are trademarks of Antenova Ltd. Any other names and/or trademarks belong to their respective companies.

The materials provided herein are believed to be reliable and correct at the time of print. Antenova does not warrant the accuracy or completeness of the information, text, graphics or other items contained within these information. Antenova further assumes no responsibility for the use of this information, and all such information shall be entirely at the user's risk.



Certificate No: 4598

Integrated Antenna and RF Solutions